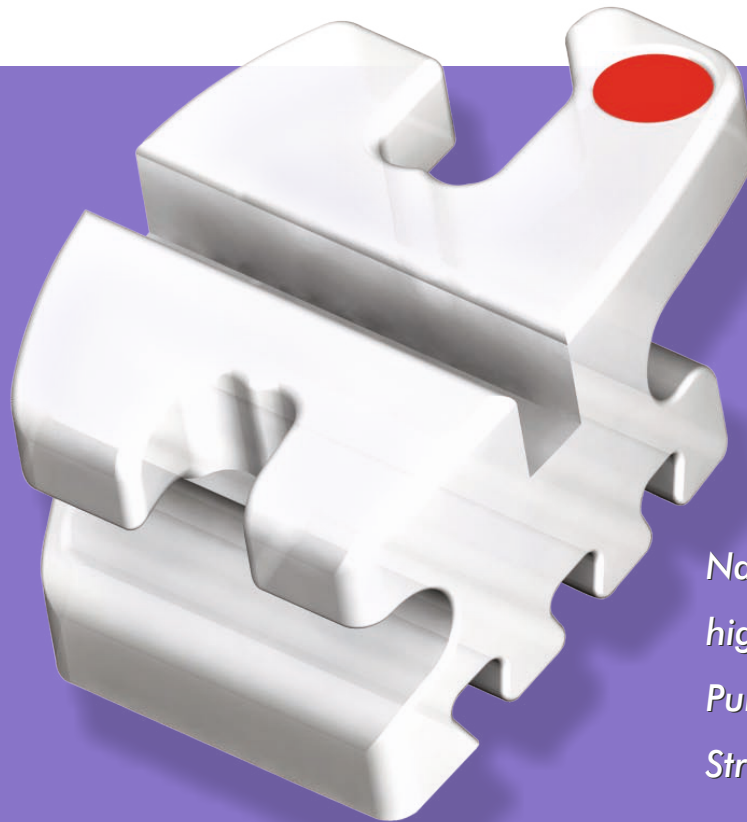
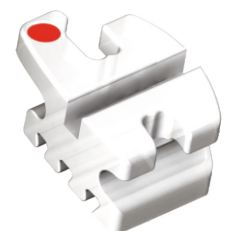


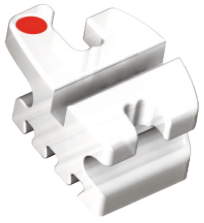
TM
ELEGANT
NANO COATED
COMPOSITE BRACKETS
by Modern Orthodontics



*Nano Particle Coating for
highest Stain Resistance
Pure Mechanical Bonding
Strong Advanced PU Material*



Compare to
OrthoflexTM by Ortho Technology
QuantumTM by Masel, SuperiorTM by Dynaflex



ELEGANT™
NANO COATED
COMPOSITE BRACKET SYSTEM

ELEGANT™
Nano Coated
COMPOSITE BRACKET SYSTEM

Compare to
Orthoflex™ by Ortho Technology
Quantum™ by Masel, Superior™ by Dynaflex

Nano Particle Coated

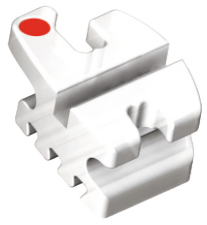
Highly resistant to stains
Impervious to liquids

Bond Like Metal Brackets

No need of a plastic primer
Also de-bonds like metal

Dove Tail Grooves

for pure
mechanical bonding



ELEGANT™
NANO COATED
COMPOSITE BRACKET SYSTEM

Removable Color Coded ID Dot
For easy bracket selection

Ultra-Smooth, Strong Hooks
For added patient comfort and
secure engagement of elastics

Smooth, Strong and
Contoured Tie Wings
For added patient comfort

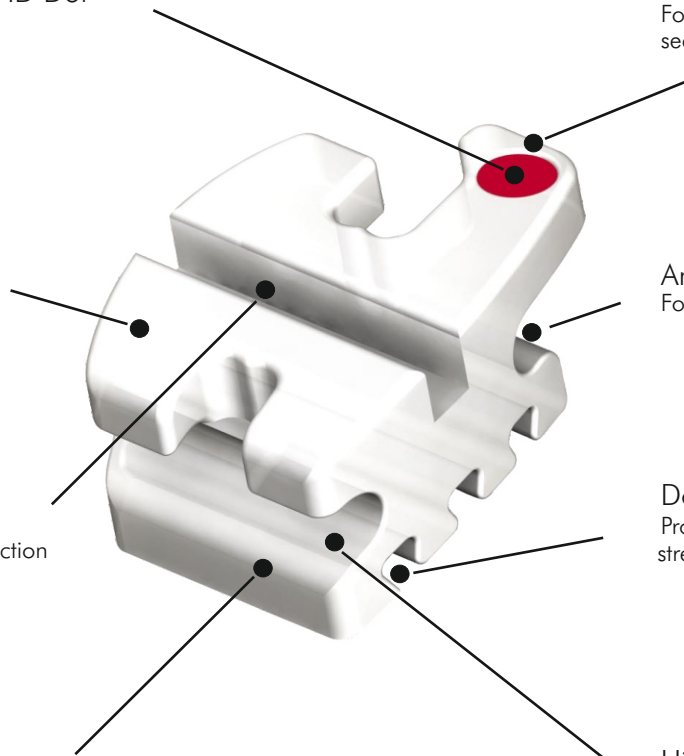
Ample Tie Wing Area
For easy bracket ligation

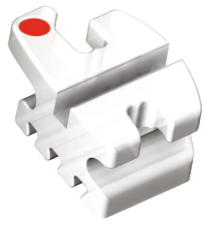
Archwire Slot Design
Resists deformation and less friction
for superior sliding mechanics

Dovetail Bonding Base
Provides superior mechanical bond
strength and predictable debonding

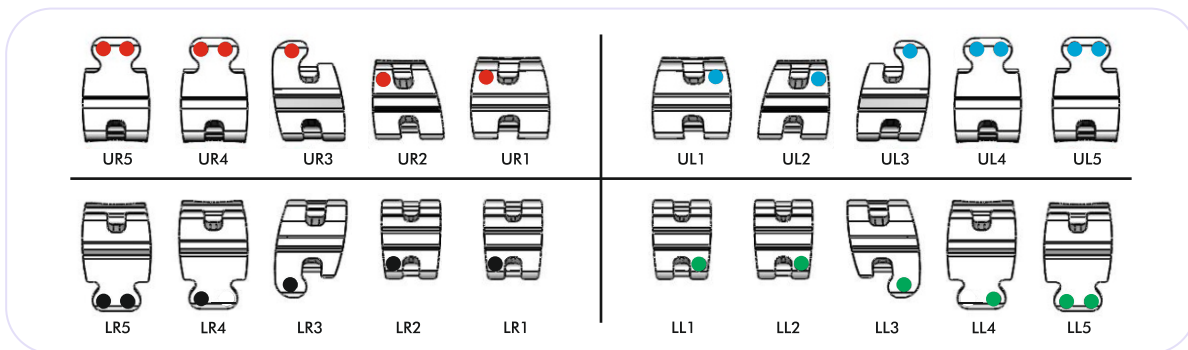
Compound Contour Base
Provides simplified and accurate
bracket placement

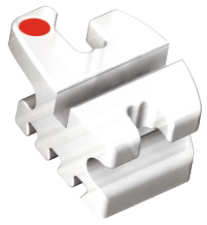
Highest Quality Material
Made from high quality poly
urethane composite





ELEGANTTM
 NANO COATED
 COMPOSITE BRACKET SYSTEM



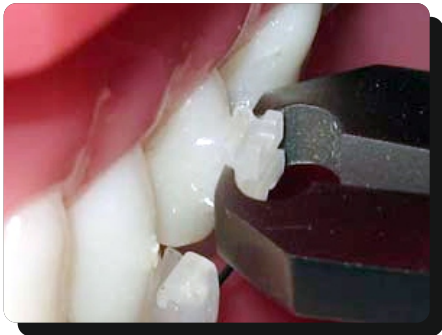


ELEGANT™
NANO COATED
COMPOSITE BRACKET SYSTEM

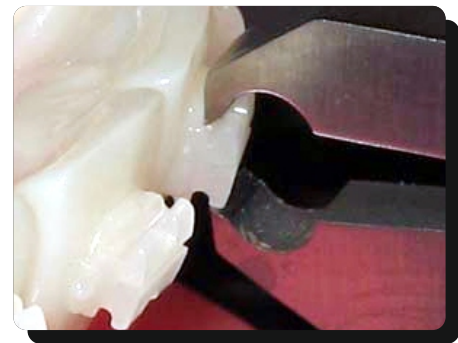
Bonds & De-Bonds Just Like A Metal Bracket



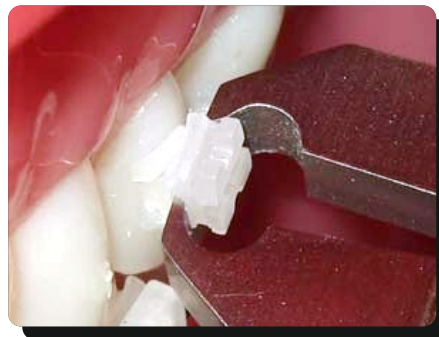
De-bonding tool to be used



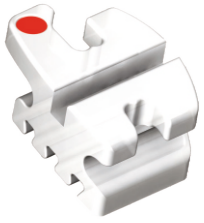
Grasp the brackets on the mesio-distal side close to the tooth



Wrong method of De-bonding



Twist the bracket 90° clockwise to safely remove the bracket



ELEGANTTM
 NANO COATED
 COMPOSITE BRACKET SYSTEM

Roth Prescription

Maxillary ▲

	Tooth	Torque	Angle	Width	R/L	ID	.018	.022
<u>1 1</u>	Central	+12°	+5°	.155"	R	●	BTE-R8-001	BTE-R2-001
					L	●	BTE-R8-002	BTE-R2-002
<u>2 2</u>	Lateral	+8°	+9°	.133"	R	●	BTE-R8-003	BTE-R2-003
					L	●	BTE-R8-004	BTE-R2-004
<u>3 3</u>	Cuspid with Hook	0°	+11°	.131"	R	●	BTE-R8-005	BTE-R2-005
					L	●	BTE-R8-006	BTE-R2-006
<u>4/5 4/5</u>	1 st & 2 nd Bicuspid	-7°	0°	.130"	R	●	BTE-R8-009	BTE-R2-009
					L	●	BTE-R8-010	BTE-R2-010
<u>4/5 4/5</u>	1 st & 2 nd Bicuspid Hk	-7°	0°	.130"	R	●	BTE-R8-011	BTE-R2-011
					L	●	BTE-R8-012	BTE-R2-012

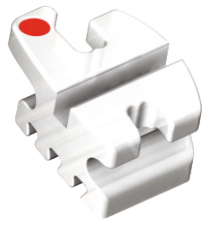
Roth Prescription

Mandibular ▼

	Tooth	Torque	Angle	Width	R/L	ID	.018	.022
<u>1/2 1/2</u>	Lower Anterior	0°	0°	.110"	R	●	BTE-R8-014	BTE-R2-014
					L	●	BTE-R8-015	BTE-R2-015
<u>3 3</u>	Cuspid With hook	-11°	+5°	.133"	R	●	BTE-R8-016	BTE-R2-016
					L	●	BTE-R8-017	BTE-R2-017
<u>4 4</u>	1st Bicuspid	-17°	0°	.133"	R	●	BTE-R8-020	BTE-R2-020
					L	●	BTE-R8-021	BTE-R2-021
<u>4 4</u>	1 st Bicuspid with hook	-17°	0°	.133"	R	●	BTE-R8-022	BTE-R2-022
					L	●	BTE-R8-023	BTE-R2-023
<u>5 5</u>	2 nd Bicuspid	-22°	0°	.133"	R	●	BTE-R8-024	BTE-R2-024
					L	●	BTE-R8-025	BTE-R2-025
<u>5 5</u>	2 nd Bicuspid with hook	-22°	0°	.133"	R	●	BTE-R8-026	BTE-R2-026
					L	●	BTE-R8-027	BTE-R2-027

Full Kits ▲▼

Kits	.018	.022
Upper/Lower 5x5 Hook on 3	BKE-R8-102	BKE-R2-102
Upper/Lower 5x5 Hooks on 3,4 & 5	BKE-R8-104	BKE-R2-104



MBT Prescription
 Maxillary ▲

	Tooth	Torque	Angle	Width	R/L	ID	.018	.022
1 1	Central	+17°	+4°	.125"	R	●	BTE-M8-101	BTE-M2-101
					L	●	BTE-M8-102	BTE-M2-102
2 2	Lateral	+10°	+8°	.122"	R	●	BTE-M8-103	BTE-M2-103
					L	●	BTE-M8-104	BTE-M2-104
3 3	Cuspid with hook	0°	+9°	.122"	R	●	BTE-M8-105	BTE-M2-105
					L	●	BTE-M8-106	BTE-M2-106
3 3	Cuspid with hook	-7°	+9°	.122"	R	●	BTE-M8-107	BTE-M2-107
					L	●	BTE-M8-108	BTE-M2-108
4/5 4/5	1 st & 2 nd Bicuspid	-7°	0°	.122"	R	●	BTE-M8-109	BTE-M2-109
					L	●	BTE-M8-110	BTE-M2-110
4/5 4/5	1 st & 2 nd Bicuspid Hk	-7°	0°	.122"	R	●	BTE-M8-111	BTE-M2-111
					L	●	BTE-M8-112	BTE-M2-112

MBT Prescription
 Mandibular ▼

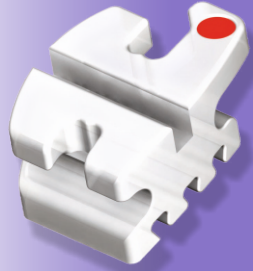
	Tooth	Torque	Angle	Width	R/L	ID	.018	.022
1/2 1/2	Lower Anterior	-6°	0°	.116"	R	●	BTE-M8-114	BTE-M2-114
					L	●	BTE-M8-115	BTE-M2-115
3 3	Cuspid with hook	0°	+3°	.122"	R	●	BTE-M8-116	BTE-M2-116
					L	●	BTE-M8-117	BTE-M2-117
3 3	Cuspid with hook	-6°	+3°	.122"	R	●	BTE-M8-118	BTE-M2-118
					L	●	BTE-M8-119	BTE-M2-119
4 4	1 st Bicuspid	-12°	+2°	.122"	R	●	BTE-M8-120	BTE-M2-120
					L	●	BTE-M8-121	BTE-M2-121
4 4	1 st Bicuspid with hook	-12°	+2°	.122"	R	●	BTE-M8-122	BTE-M2-122
					L	●	BTE-M8-123	BTE-M2-123
5 5	2 nd Bicuspid	-17°	+2°	.122"	R	●	BTE-M8-124	BTE-M2-124
					L	●	BTE-M8-125	BTE-M2-125
5 5	2 nd Bicuspid with hook	-17°	+2°	.122"	R	●	BTE-M8-126	BTE-M2-126
					L	●	BTE-M8-127	BTE-M2-127

Full Kits ▲▼

Kits	.018	.022
Upper/Lower 5x5 Hook on 3	BKE-M8-102*	BKE-M2-102*
Upper/Lower 5x5 Hooks on 3,4 & 5	BKE-M8-104*	BKE-M2-104*
Upper/Lower 5x5 Hook on 3	BKE-M8-202	BKE-M2-202
Upper/Lower 5x5 Hooks on 3,4 & 5	BKE-M8-204	BKE-M2-204

* Cuspid brackets in these Kits are having -7 deg torque in uppers and -6 deg torque in lowers.
 Other kits have 0 deg torque in all cuspids.
 For any other cuspid torque combination, please place order for individual brackets.

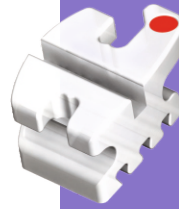
ELEGANTTM
Nano Coated
COMPOSITE BRACKET SYSTEM
by Modern Orthodontics LLC



Modern
Orthodontics



ELEGANTTM
COMPOSITE BRACKET SYSTEM



ELEGANTTM
COMPOSITE BRACKET SYSTEM

