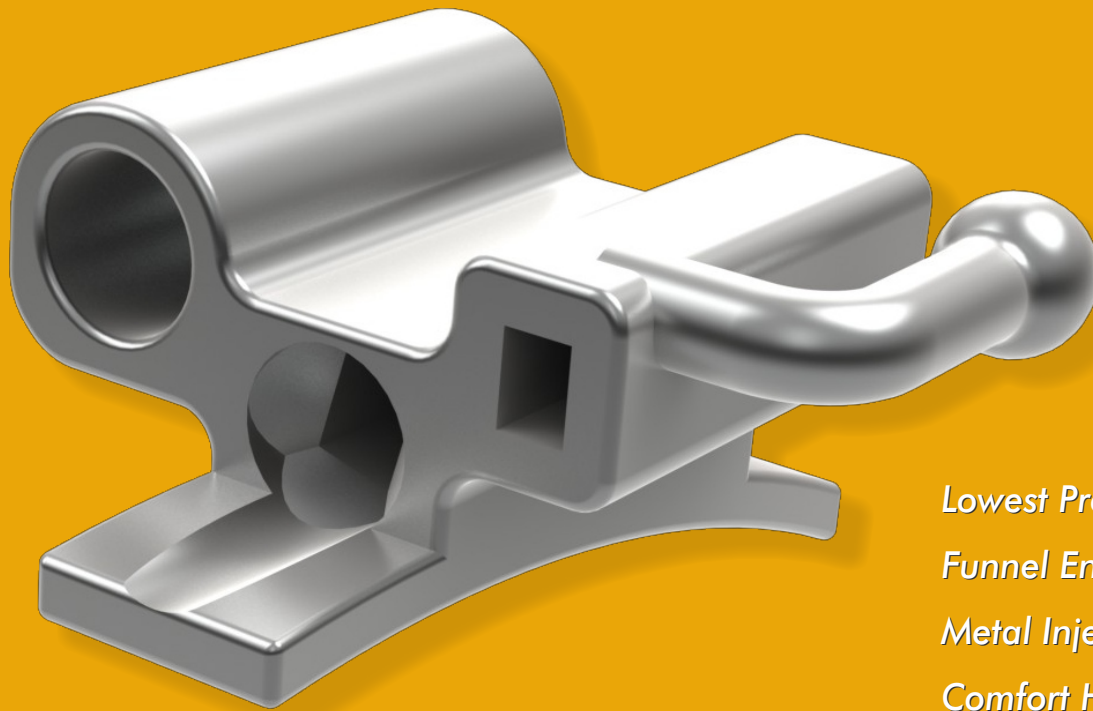


Elfin™

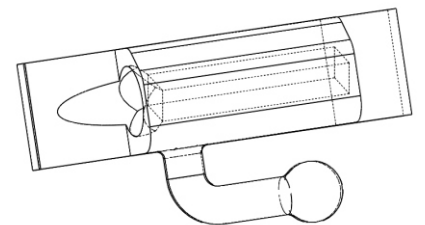
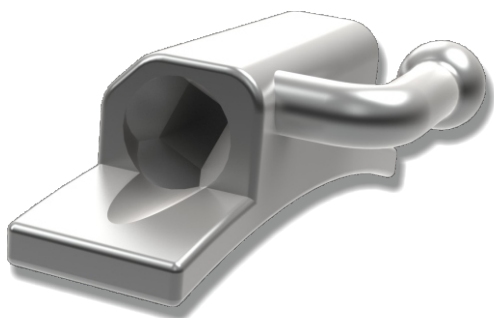
FUNNEL ENTRY

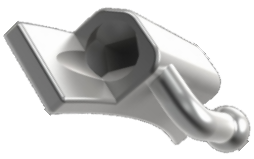
MOLAR TUBES

by Modern Orthodontics



Lowest Profile
Funnel Entry
Metal Injection Molded
Comfort Hooks





Elfin™
FUNNEL ENTRY
MINI MOLAR TUBES

Lowest Profile Design to avoid occlusal interferences and for best in-out values

Ultra Mini Size

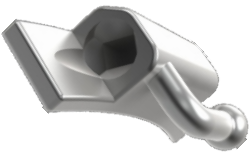


Comfort design ball hooks

Chamfered entry for easier wire insertion

Parallel walls allow secure holding during bonding
With any regular fine tip bonding tweezers





Comparison to convertible tubes

Funneled opening for easier insertion of today's flexible wires into second molar tubes

Lower profile compared to convertible tubes



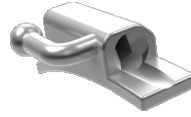
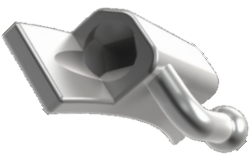
Small Mesio-Distal width allows more inter bracket distance

No tie-wings for reduced occlusal interference

No Convertible cap means no failures

Accentuated mesial opening makes convertibility unnecessary





Upper single 1st molar tubes

| Slot Torque | Prescription | Slot Size | Weldable | | Bondable | |
|-------------|--------------|-----------|-----------|-----------|-----------|-----------|
| | | | Left | Right | Left | Right |
| -10° | Roth | .018" | MT-8W-S03 | MT-8W-S02 | MT-8B-S03 | MT-8B-S02 |
| -10° | Roth | .022" | MT-2W-S03 | MT-2W-S02 | MT-2B-S03 | MT-2B-S02 |
| -14° | MBT | .018" | MT-8W-S05 | MT-8W-S04 | MT-8B-S05 | MT-8B-S04 |
| -14° | MBT | .022" | MT-2W-S05 | MT-2W-S04 | MT-2B-S05 | MT-2B-S04 |
| Round | BEGG | .036" | MT-6W-S22 | MT-6W-S21 | MT-6B-S22 | MT-6B-S21 |



Upper single 2nd molar tubes

| Slot Torque | Prescription | Slot Size | Weldable | | Bondable | |
|-------------|--------------|-----------|-----------|-----------|-----------|-----------|
| | | | Left | Right | Left | Right |
| -10° | Roth | .018" | MT-8W-S03 | MT-8W-S02 | MT-8B-S23 | MT-8B-S22 |
| -10° | Roth | .022" | MT-2W-S03 | MT-2W-S02 | MT-2B-S23 | MT-2B-S22 |
| -14° | MBT | .018" | MT-8W-S05 | MT-8W-S04 | MT-8B-S25 | MT-8B-S24 |
| -14° | MBT | .022" | MT-2W-S05 | MT-2W-S04 | MT-2B-S25 | MT-2B-S24 |



Upper double auxiliary tubes

.018"X.025" Auxiliary tube with 0° torque

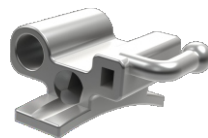
| Slot Torque | Prescription | Slot Size | Weldable | | Bondable | |
|-------------|--------------|-----------|-----------|-----------|-----------|-----------|
| | | | Left | Right | Left | Right |
| -10° | Roth | .018" | MT-8W-D07 | MT-8W-D06 | MT-8B-D07 | MT-8B-D06 |
| -10° | Roth | .022" | MT-2W-D07 | MT-2W-D06 | MT-2B-D07 | MT-2B-D06 |
| -14° | MBT | .018" | MT-8W-D09 | MT-8W-D08 | MT-8B-D09 | MT-8B-D08 |
| -14° | MBT | .022" | MT-2W-D09 | MT-2W-D08 | MT-2B-D09 | MT-2B-D08 |



Upper double headgear tubes

.045" Occlusal headgear tube

| Slot Torque | Prescription | Slot Size | Weldable | | Bondable | |
|-------------|--------------|-----------|-----------|-----------|-----------|-----------|
| | | | Left | Right | Left | Right |
| -10° | Roth | .018" | MT-8W-D03 | MT-8W-D02 | MT-8B-D03 | MT-8B-D02 |
| -10° | Roth | .022" | MT-2W-D03 | MT-2W-D02 | MT-2B-D03 | MT-2B-D02 |
| -14° | MBT | .018" | MT-8W-D05 | MT-8W-D04 | MT-8B-D05 | MT-8B-D04 |
| -14° | MBT | .022" | MT-2W-D05 | MT-2W-D04 | MT-2B-D05 | MT-2B-D04 |



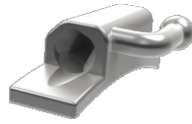
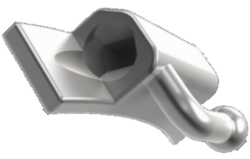
Upper triple tubes

.018"X.025" Auxiliary tube with 0° torque

.045" Occlusal headgear tube

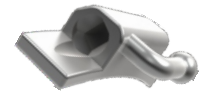
| Slot Torque | Prescription | Slot Size | Weldable | | Bondable | |
|-------------|--------------|-----------|-----------|-----------|-----------|-----------|
| | | | Left | Right | Left | Right |
| -10° | Roth | .018" | MT-8W-T03 | MT-8W-T02 | MT-8B-T03 | MT-8B-T02 |
| -10° | Roth | .022" | MT-2W-T03 | MT-2W-T02 | MT-2B-T03 | MT-2B-T02 |
| -14° | MBT | .018" | MT-8W-T05 | MT-8W-T04 | MT-8B-T05 | MT-8B-T04 |
| -14° | MBT | .022" | MT-2W-T05 | MT-2W-T04 | MT-2B-T05 | MT-2B-T04 |





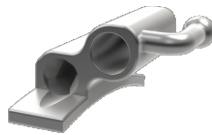
Lower single 1st molar tubes

| Slot Torque | Prescription | Slot Size | Weldable | | Bondable | |
|-------------|--------------|-----------|-----------|-----------|-----------|-----------|
| | | | Left | Right | Left | Right |
| -25° | Roth | .018" | MT-8W-S07 | MT-8W-S06 | MT-8B-S07 | MT-8B-S06 |
| -25° | Roth | .022" | MT-2W-S07 | MT-2W-S06 | MT-2B-S07 | MT-2B-S06 |
| -20° | MBT | .018" | MT-8W-S09 | MT-8W-S08 | MT-8B-S09 | MT-8B-S08 |
| -20° | MBT | .022" | MT-2W-S09 | MT-2W-S08 | MT-2B-S09 | MT-2B-S08 |
| - | BEGG | .036" | MT-6W-S24 | MT-6W-S23 | MT-6B-S24 | MT-6B-S23 |



Lower single 2nd molar tubes

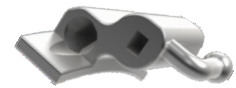
| Slot Torque | Prescription | Slot Size | Weldable | | Bondable | |
|-------------|--------------|-----------|-----------|-----------|-----------|-----------|
| | | | Left | Right | Left | Right |
| -25° | Roth | .018" | MT-8W-S27 | MT-8W-S26 | MT-8B-S27 | MT-8B-S26 |
| -25° | Roth | .022" | MT-2W-S27 | MT-2W-S26 | MT-2B-S27 | MT-2B-S26 |
| -10° | MBT | .018" | MT-8W-S29 | MT-8W-S28 | MT-8B-S29 | MT-8B-S28 |
| -10° | MBT | .022" | MT-2W-S29 | MT-2W-S28 | MT-2B-S29 | MT-2B-S28 |



Lower double lip bumper tubes

.045" Gingival lip bumper tube

| Slot Torque | Prescription | Slot Size | Weldable | | Bondable | |
|-------------|--------------|-----------|-----------|-----------|-----------|-----------|
| | | | Left | Right | Left | Right |
| -25° | Roth | .018" | MT-8W-D11 | MT-8W-D10 | MT-8B-D11 | MT-8B-D10 |
| -25° | Roth | .022" | MT-2W-D11 | MT-2W-D10 | MT-2B-D11 | MT-2B-D10 |
| -20° | MBT | .018" | MT-8W-D13 | MT-8W-D12 | MT-8B-D13 | MT-8B-D12 |
| -20° | MBT | .022" | MT-2W-D13 | MT-2W-D12 | MT-2B-D13 | MT-2B-D12 |

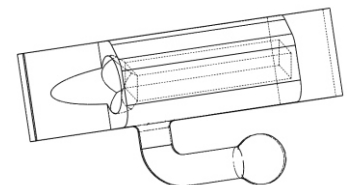


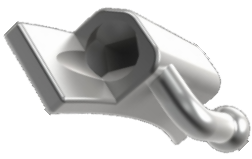
Lower double auxiliary tubes

.018"X.025" Auxiliary tube with 0 torque

| Slot Torque | Prescription | Slot Size | Weldable | | Bondable | |
|-------------|--------------|-----------|-----------|-----------|-----------|-----------|
| | | | Left | Right | Left | Right |
| -25° | Roth | .018" | MT-8W-D15 | MT-8W-D14 | MT-8B-D15 | MT-8B-D14 |
| -25° | Roth | .022" | MT-2W-D15 | MT-2W-D14 | MT-2B-D15 | MT-2B-D14 |
| -20° | MBT | .018" | MT-8W-D17 | MT-8W-D16 | MT-8B-D17 | MT-8B-D16 |
| -20° | MBT | .022" | MT-2W-D17 | MT-2W-D16 | MT-2B-D17 | MT-2B-D16 |

Convenient 5 patient packs on next page





Elfin™

FUNNEL ENTRY
MINI MOLAR TUBES

5 patient pack Roth .018" 1st molar tubes

| Prescription | Slot Size | Weldable | | Cat. No. | Slot Size | Bondable | | Cat. No. |
|--------------|-----------|------------------|-------------------|-----------|-----------|------------------|------------------|-----------|
| | | Upper | Lower | | | Upper | Lower | |
| Roth | .018" | Single | Single | MT-8W-K01 | .018" | Single | Single | MT-8B-K01 |
| Roth | .018" | Double Headgear | Single | MT-8W-K02 | .018" | Double Headgear | Single | MT-8B-K02 |
| Roth | .018" | Double Auxillary | Single | MT-8W-K03 | .018" | Double Auxillary | Single | MT-8B-K03 |
| Roth | .018" | Triple | Double Auxillary | MT-8W-K04 | .018" | Triple | Double Auxillary | MT-8B-K04 |
| Roth | .018" | Triple | Double Lip-bumper | MT-8W-K05 | .018" | Triple | Double Lipbumper | MT-8B-K05 |



5 patient pack Roth .022" 1st molar tubes

| Prescription | Slot Size | Weldable | | Cat. No. | Slot Size | Bondable | | Cat. No. |
|--------------|-----------|------------------|-------------------|-----------|-----------|------------------|------------------|-----------|
| | | Upper | Lower | | | Upper | Lower | |
| Roth | .022" | Single | Single | MT-2W-K01 | .022" | Single | Single | MT-2B-K01 |
| Roth | .022" | Double Headgear | Single | MT-2W-K02 | .022" | Double Headgear | Single | MT-2B-K02 |
| Roth | .022" | Double Auxillary | Single | MT-2W-K03 | .022" | Double Auxillary | Single | MT-2B-K03 |
| Roth | .022" | Triple | Double Auxillary | MT-2W-K04 | .022" | Triple | Double Auxillary | MT-2B-K04 |
| Roth | .022" | Triple | Double Lip-bumper | MT-2W-K05 | .022" | Triple | Double Lipbumper | MT-2B-K05 |

5 patient pack MBT .018" 1st molar tubes

| Prescription | Slot Size | Weldable | | Cat. No. | Slot Size | Bondable | | Cat. No. |
|--------------|-----------|------------------|-------------------|-----------|-----------|------------------|------------------|-----------|
| | | Upper | Lower | | | Upper | Lower | |
| MBT | .018" | Single | Single | MT-8W-K11 | .018" | Single | Single | MT-8B-K11 |
| MBT | .018" | Double Headgear | Single | MT-8W-K12 | .018" | Double Headgear | Single | MT-8B-K12 |
| MBT | .018" | Double Auxillary | Single | MT-8W-K13 | .018" | Double Auxillary | Single | MT-8B-K13 |
| MBT | .018" | Triple | Double Auxillary | MT-8W-K14 | .018" | Triple | Double Auxillary | MT-8B-K14 |
| MBT | .018" | Triple | Double Lip-bumper | MT-8W-K15 | .018" | Triple | Double Lipbumper | MT-8B-K15 |

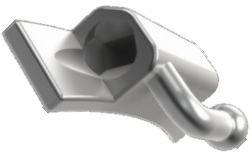
5 patient pack MBT .022" 1st molar tubes

| Prescription | Slot Size | Weldable | | Cat. No. | Slot Size | Bondable | | Cat. No. |
|--------------|-----------|------------------|------------------|-----------|-----------|------------------|------------------|-----------|
| | | Upper | Lower | | | Upper | Lower | |
| MBT | .022" | Single | Single | MT-2W-K11 | .022" | Single | Single | MT-2B-K11 |
| MBT | .022" | Double Headgear | Single | MT-2W-K12 | .022" | Double Headgear | Single | MT-2B-K12 |
| MBT | .022" | Double Auxillary | Single | MT-2W-K13 | .022" | Double Auxillary | Single | MT-2B-K13 |
| MBT | .022" | Triple | Double Auxillary | MT-2W-K14 | .022" | Triple | Double Auxillary | MT-2B-K14 |
| MBT | .022" | Triple | Double Lipbumper | MT-2W-K15 | .022" | Triple | Double Lipbumper | MT-2B-K15 |

5 patient pack 2nd molar tubes

| Prescription | Slot Size | Weldable | | Cat. No. | Slot Size | Bondable | | Cat. No. |
|--------------|-----------|----------|--------|-----------|-----------|----------|--------|-----------|
| | | Upper | Lower | | | Upper | Lower | |
| Roth | .018" | Single | Single | MT-8W-K21 | .018" | Single | Single | MT-8B-K21 |
| Roth | .022" | Single | Single | MT-2W-K21 | .022" | Single | Single | MT-2B-K21 |
| MBT | .018" | Single | Single | MT-8W-K22 | .018" | Single | Single | MT-8B-K22 |
| MBT | .022" | Single | Single | MT-2W-K22 | .022" | Single | Single | MT-2B-K22 |





Elfin™

FUNNEL ENTRY
MINI MOLAR TUBES



Lingual Button
Weldable

Cat.no. ALU-LB-001



Weldable Sheath

Cat.no. ALU-LS-001



Weldable Cleat

Cat.no. ALU-LC-001

Bondable
Lingual
Cleat

Cat.no. ALU-LC-002
10 per pack



Direct Bond
Lingual Buttons
Round Base

Cat.no. ALU-LB-002
10 per pack



Weldable
Lingual
Cleat

Cat.no. ALU-LC-001
10 per pack



Lingual
Sheath

Cat.no. ALU-LS-001
10 per pack

